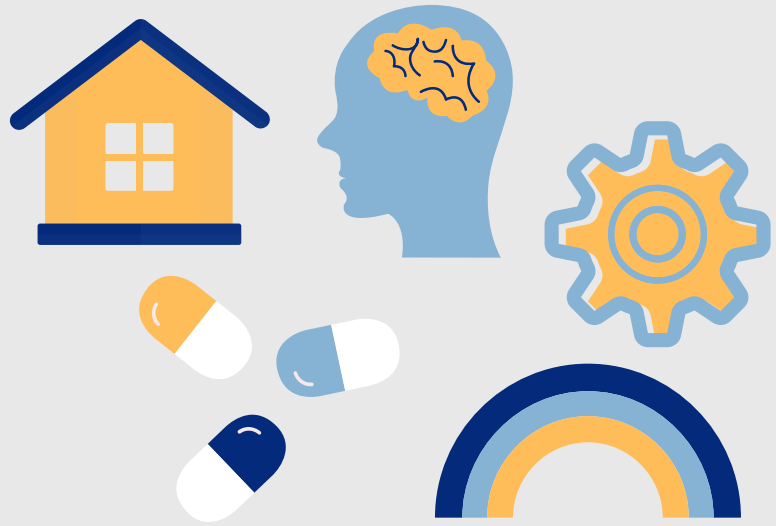




National Alliance on Mental Illness

2019 PANEL DISCUSSION GROUPS



MARCH 7

HOMELESSNESS SERVICES

Housing Resources Incorporated; Kalamazoo Community Mental Health & Substance Abuse Services Housing Department; Gospel Mission; Open Door/Next Door; Residential Opportunities Inc.; Recovery Housing.

MAY 2

MENTAL HEALTH SERVICES

Kalamazoo Community Mental Health & Substance Abuse Services Emergency Mental Health/Intensive Crisis Stabilization/Whole Health Initiative, Mental Health Recovery Court services and Access Center; Family and Children's Services Mobile Crisis Response Team for youth; Interact of Michigan; Recovery Institute.

AUG. 1

LGBTQ AND LEGAL SERVICES

Outfront LGBTQ Center services and support groups; Ross Keilen, Special Needs Will & Trust/Estate Planning/Future Planning; Kalamazoo Probate Court regarding probate and guardianship questions.

SEPT. 5

SUBSTANCE ABUSE SERVICES

Elizabeth Upjohn Community Healing Center and Gilmore Treatment Center; Community Outreach and Prevention (COPE) Network; Kalamazoo Community Mental Health & Substance Abuse Services Opiate Overdose Response Program; Southwest Michigan Behavioral Health; Interact of Michigan Substance Abuse SAMM program.

NOV. 7

EMPLOYMENT SERVICES

Goodwill Industries Employment Services; Michigan Rehabilitation Services; MRC Pathways - Structured Employment Services; Interact of Michigan - Action Employment Services; Urban Alliance/Momentum Program

NAMI OF KALAMAZOO DISCUSSION GROUPS ARE HELD FROM 6-8PM AT PATHWAYS, 119 W. VINE STREET, KALAMAZOO, MI 49001